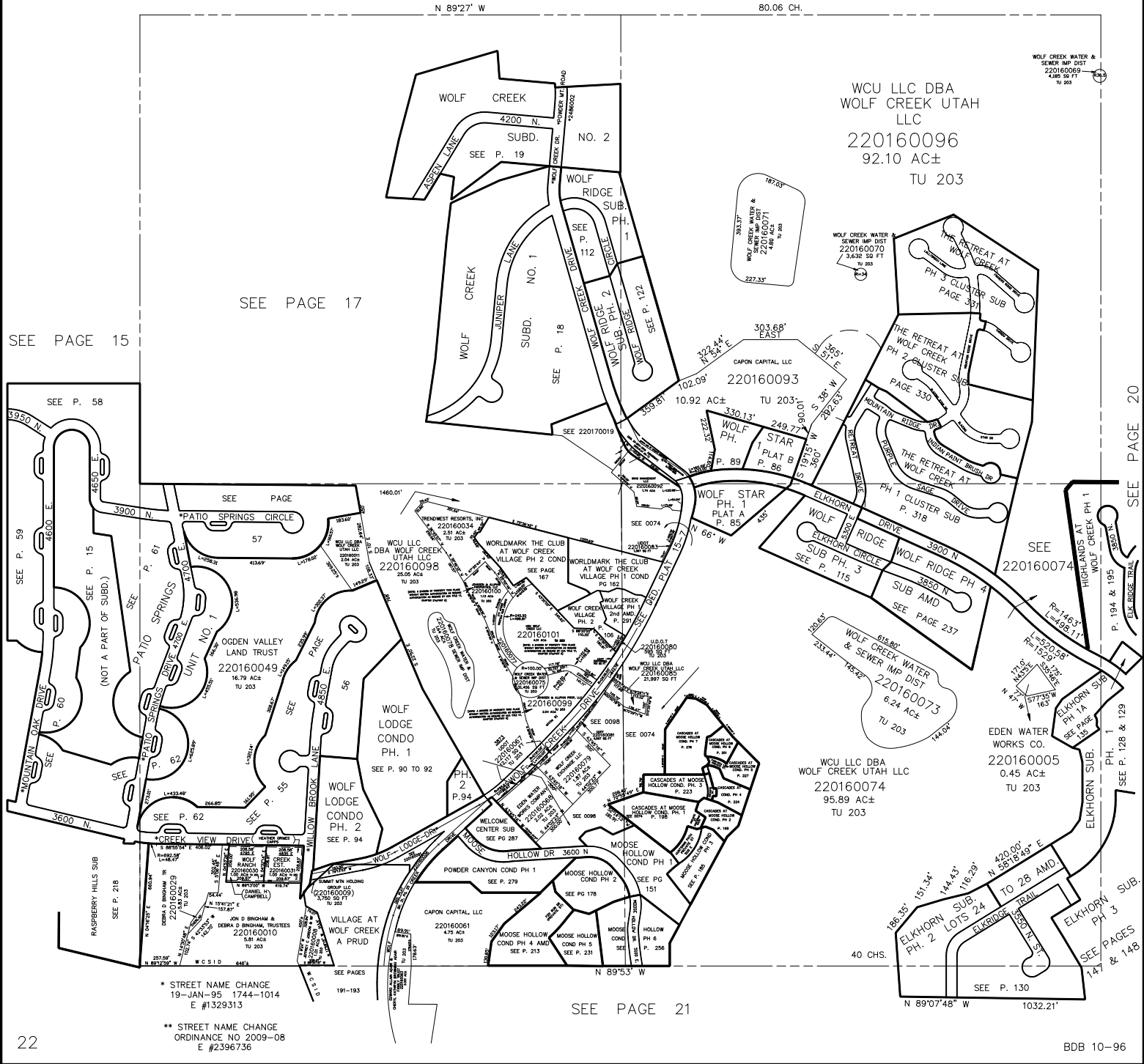


SECTION 22, T.7N., R.1E., S.L.B. & M.

IN WEBER COUNTY  
SCALE 1" = 400'

TAXING UNIT: 203

SEE PAGE 6



SEE PAGE 17

SEE PAGE 15

SEE P. 58

SEE PAGE

SEE PAGE 20

SEE 220160074

\* STREET NAME CHANGE  
19-JAN-95 1744-1014  
E #1329313

\*\* STREET NAME CHANGE  
ORDINANCE NO 2009-08  
E #2396736

SEE PAGE 21

SEE P. 130